

sealoc[®]

In 2017 we left our corporate jobs in Dallas and founded sealoc in the City of McKinney. With BIG dreams in our hearts – we combined our knowledge of AV Technology, with our DESIGN experience. We wanted to create technology solutions that could extend entertainment from inside the home and bring it to the outdoors. Covid fueled that mission, and we began to offer weatherloc[®] treated Outdoor Smart TVs for Residential use. The idea caught on and we have since sold TVs in over 40 states and have continued to add new products and grow our list of new weatherloc[®] treatments for small electronics.

From Our Dreams to your reality!



**Life is better
Lived
Outdoors!**

weatherloc® Outdoor TVs

Created to provide the ultimate backyard entertainment experience, weatherloc® outdoor TVs feature a bright, vivid picture and have been weatherloc® treated to perform in the outdoors. These smart TVs are uniquely designed for the ultimate outdoor experience and have been treated from the inside to protect all internal components and delivers IP65-weatherloc® protection. With full sun, full shade and partial sun options, our outdoor TVs are made to deliver optimal viewing in any light condition. The 4K ultra high-definition picture provide vivid colors and deep, rich contrast to create a better viewing experience. Stream your favorite apps, movies and shows on these weatherloc® televisions.

The **weatherloc®** Outdoor Residential Collection Price Guide

weatherloc® Outdoor Smart TVs have the latest features that you expect from your Indoor TV but have been weatherloc® treated to survive in your Outdoor oasis. weatherloc® technology is the proprietary process developed by sealoc, by which sensitive electronics and other outdoor products are shielded from weather, adverse elements, and corrosive environments - thereby expanding products lifespan, enhancing experience, and positively impacting economic investment.

extend your
living space
to the
Outdoors!





Sun Series Full Exposure

Sun Series - Full Exposure can withstand all kinds of weather and are designed for any outdoor location with full sun exposure.

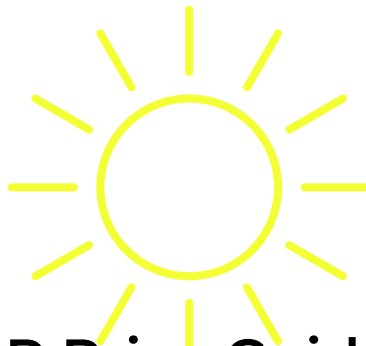
The Samsung QN95 Bundle and the QN90 Series have been designed and weatherloc® treated for sunny outdoor living areas such as a patio, pool deck or yard.

Designed to deliver a stunning viewing experience, with 4K ultra-high-definition (UHD), and up to 2,200 Nit LED Screen that delivers a crystal-clear image and an ultra-bright picture at four times the resolution of full HD. Smart TV comes with integrated smart functionality for streaming shows and movies. IP65-rated that withstands UV rays, rain, snow, dirt, dust, insects and humidity, as well as extreme operating temperatures from -24°F to 104°F.



Sun Series Full Exposure Collection





2024 weatherloc® treated Outdoor Residential Smart TVs MSRP Price Guide
 Pricing includes Complimentary TV Cover, Shipping in the Continental US + 2 Year weatherloc® Warranty



BUNDLE DEAL!



weatherloc® Samsung QN95 Series - 2,200 Nits Bundle includes a Full Motion Mount for TV, Sonos Beam Soundbar and Soundbar Mount

| | | | | | |
|--------------|---|-----------|------------|-------------|----------------------|
| WLCSSQN95-65 | 65" Neo QLED QN95 Series 4K UHD Resolution Smart TV | Landscape | 2,200 Nits | 6x7 Runtime | MSRP \$ 6,599 |
| WLCSSQN95-75 | 75" Neo QLED QN95 Series 4K UHD Resolution Smart TV | Landscape | 2,200 Nits | 6x7 Runtime | MSRP \$ 9,099 |
| WLCSSQN95-85 | 85" Neo QLED QN95 Series 4K UHD Resolution Smart TV | Landscape | 2,200 Nits | 6x7 Runtime | MSRP \$11,999 |

BEST SELLING PRODUCT



weatherloc® Samsung QN90 Series - 2,000 Nits

| | | | | | |
|--------------|---|-----------|------------|-------------|----------------------|
| WLCSSQN90-43 | 43" Neo QLED QN90 Series 4K UHD Resolution Smart TV | Landscape | 2,000 Nits | 6x7 Runtime | MSRP \$ 2,899 |
| WLCSSQN90-50 | 50" Neo QLED QN90 Series 4K UHD Resolution Smart TV | Landscape | 2,000 Nits | 6x7 Runtime | MSRP \$ 3,699 |
| WLCSSQN90-55 | 55" Neo QLED QN90 Series 4K UHD Resolution Smart TV | Landscape | 2,000 Nits | 6x7 Runtime | MSRP \$ 4,499 |
| WLCSSQN90-65 | 65" Neo QLED QN90 Series 4K UHD Resolution Smart TV | Landscape | 2,000 Nits | 6x7 Runtime | MSRP \$ 6,199 |
| WLCSSQN90-75 | 75" Neo QLED QN90 Series 4K UHD Resolution Smart TV | Landscape | 2,000 Nits | 6x7 Runtime | MSRP \$ 8,499 |
| WLCSSQN90-85 | 85" Neo QLED QN90 Series 4K UHD Resolution Smart TV | Landscape | 2,000 Nits | 6x7 Runtime | MSRP \$10,199 |

In order to receive Pro Pricing please complete our online dealer application - <https://www.sealocTVs.com/dealerapplication>



Partial Sun Series Full Exposure

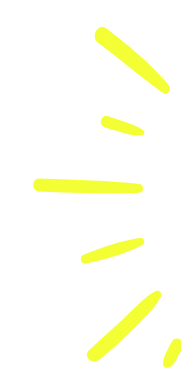
Partial Sun - Full Exposure Series can withstand all kinds of weather and are designed for partially sunny areas.

The Samsung QN85 and Samsung Q80 Series have been designed and weatherloc® treated for partially sunny outdoor living areas such as a patio, deck or yard.

Designed to deliver a stunning viewing experience, with 4K ultra-high-definition (UHD), 1000 and 900 - Nit LED Screen that delivers a crystal-clear image and an ultra-bright picture at four times the resolution of full HD. Smart TV comes with integrated smart functionality for streaming shows and movies. IP65-rated that withstands UV rays, rain, snow, dirt, dust, insects and humidity, as well as extreme operating temperatures from -24°F to 104°F.



Partial Sun
Full Exposure



2024 weatherloc® treated Outdoor Residential Smart TVs MSRP Price Guide
Pricing includes Complimentary TV Cover, Shipping in the Continental US + 2 Year weatherloc® Warranty



weatherloc® Samsung QN85 Series - 1,000 Nits

| | | | | | |
|--------------|---|-----------|------------|-------------|---------------------|
| WLCSSQN85-55 | 55" Neo QLED QN85 Series 4K UHD Resolution Smart TV | Landscape | 1,000 Nits | 6x7 Runtime | MSRP \$4,299 |
| WLCSSQN85-65 | 65" Neo QLED QN85 Series 4K UHD Resolution Smart TV | Landscape | 1,000 Nits | 6x7 Runtime | MSRP \$5,999 |
| WLCSSQN85-75 | 75" Neo QLED QN85 Series 4K UHD Resolution Smart TV | Landscape | 1,000 Nits | 6x7 Runtime | MSRP \$7,699 |
| WLCSSQN85-85 | 85" Neo QLED QN85 Series 4K UHD Resolution Smart TV | Landscape | 1,000 Nits | 6x7 Runtime | MSRP \$9,699 |



weatherloc® Samsung Q80 Series - 900 Nits

| | | | | | |
|-------------|--|-----------|----------|-------------|---------------------|
| WLCSSQ80-55 | 55" QLED Q80 Series 4K UHD Resolution Smart TV | Landscape | 900 Nits | 6x7 Runtime | MSRP \$3,299 |
| WLCSSQ80-65 | 65" QLED Q80 Series 4K UHD Resolution Smart TV | Landscape | 900 Nits | 6x7 Runtime | MSRP \$4,699 |
| WLCSSQ80-75 | 75" QLED Q80 Series 4K UHD Resolution Smart TV | Landscape | 900 Nits | 6x7 Runtime | MSRP \$6,099 |
| WLCSSQ80-85 | 85" QLED Q80 Series 4K UHD Resolution Smart TV | Landscape | 900 Nits | 6x7 Runtime | MSRP \$7,899 |

In order to receive Pro Pricing please complete our online dealer application - <https://www.sealocTVs.com/dealerapplication>



Full Shade Full Exposure

OUTDOOR RESIDENTIAL



Full Shade Full Exposure

Watch the morning news, sports or an evening movie in the backyard! These specially designed models are for Full Shade - Full Exposure and can withstand all kinds of weather.

weatherloc® treated for Full Shade - Full Exposure living areas such as a patio, deck or yard.

Designed to deliver a stunning viewing experience, with 4K ultra-high-definition (UHD), 550 - 300 Nit LED Screen that delivers a crystal-clear image and an ultra-bright picture at four times the resolution of full HD. Smart TV comes with integrated smart functionality for streaming shows and movies. IP65-rated that withstands UV rays, rain, snow, dirt, dust, insects and humidity, as well as extreme operating temperatures from -24°F to 104°F.





2024 weatherloc® treated Outdoor Residential Smart TVs MSRP Price Guide
 Pricing includes Complimentary TV Cover, Shipping in the Continental US + 2 Year weatherloc® Warranty



NEW

weatherloc® SONY KD-X85K Series - 550 Nits

| | | | | | |
|------------|---|-----------|----------|-------------|---------------------|
| WLCX85K-43 | 43" SONY KD-X85K 4K HDR Smart Google TV | Landscape | 550 Nits | 6x7 Runtime | MSRP \$1,599 |
| WLCX85K-50 | 50" SONY KD-X85K 4K HDR Smart Google TV | Landscape | 550 Nits | 6x7 Runtime | MSRP \$2,299 |
| WLCX85K-55 | 55" SONY KD-X85K 4K HDR Smart Google TV | Landscape | 550 Nits | 6x7 Runtime | MSRP \$2,399 |
| WLCX85K-65 | 65" SONY KD-X85K 4K HDR Smart Google TV | Landscape | 550 Nits | 6x7 Runtime | MSRP \$3,799 |
| WLCX85K-75 | 75" SONY KD-X85K 4K HDR Smart Google TV | Landscape | 550 Nits | 6x7 Runtime | MSRP \$4,899 |



weatherloc® Samsung Q60 Series - 450 Nits

| | | | | | |
|-------------|-------------------------------------|-----------|----------|-------------|---------------------|
| WLCSSQ60-43 | 43" QLED Q60 Series 4K UHD Smart TV | Landscape | 450 Nits | 6x7 Runtime | MSRP \$1,999 |
| WLCSSQ60-55 | 55" QLED Q60 Series 4K UHD Smart TV | Landscape | 450 Nits | 6x7 Runtime | MSRP \$2,699 |
| WLCSSQ60-65 | 65" QLED Q60 Series 4K UHD Smart TV | Landscape | 450 Nits | 6x7 Runtime | MSRP \$3,799 |
| WLCSSQ60-75 | 75" QLED Q60 Series 4K UHD Smart TV | Landscape | 450 Nits | 6x7 Runtime | MSRP \$4,999 |
| WLCSSQ60-85 | 85" QLED Q60 Series 4K UHD Smart TV | Landscape | 450 Nits | 6x7 Runtime | MSRP \$7,199 |



weatherloc® Samsung 8 Series - 375 Nits

| | | | | | |
|------------|---|-----------|----------|-------------|---------------------|
| WLCSS8S-43 | 43" 8 Series 4K UHD TV Smart LED with HDR | Landscape | 375 Nits | 6x7 Runtime | MSRP \$1,699 |
| WLCSS8S-50 | 50" 8 Series 4K UHD TV Smart LED with HDR | Landscape | 375 Nits | 6x7 Runtime | MSRP \$1,899 |
| WLCSS8S-55 | 55" 8 Series 4K UHD TV Smart LED with HDR | Landscape | 375 Nits | 6x7 Runtime | MSRP \$2,399 |
| WLCSS8S-65 | 65" 8 Series 4K UHD TV Smart LED with HDR | Landscape | 375 Nits | 6x7 Runtime | MSRP \$3,299 |
| WLCSS8S-75 | 75" 8 Series 4K UHD TV Smart LED with HDR | Landscape | 375 Nits | 6x7 Runtime | MSRP \$4,299 |
| WLCSS8S-85 | 85" 8 Series 4K UHD TV Smart LED with HDR | Landscape | 375 Nits | 6x7 Runtime | MSRP \$5,999 |

BEST EVERYDAY VALUE



weatherloc® Samsung 7 Series - 300 Nits

| | | | | | |
|------------|---|-----------|----------|-------------|---------------------|
| WLCSS7S-43 | 43" 7 Series 4K UHD TV Smart LED with HDR | Landscape | 300 Nits | 6x7 Runtime | MSRP \$1,199 |
| WLCSS7S-50 | 50" 7 Series 4K UHD TV Smart LED with HDR | Landscape | 300 Nits | 6x7 Runtime | MSRP \$1,399 |
| WLCSS7S-55 | 55" 7 Series 4K UHD TV Smart LED with HDR | Landscape | 300 Nits | 6x7 Runtime | MSRP \$1,599 |
| WLCSS7S-65 | 65" 7 Series 4K UHD TV Smart LED with HDR | Landscape | 300 Nits | 6x7 Runtime | MSRP \$2,499 |
| WLCSS7S-75 | 75" 7 Series 4K UHD TV Smart LED with HDR | Landscape | 300 Nits | 6x7 Runtime | MSRP \$3,299 |
| WLCSS7S-85 | 85" 7 Series 4K UHD TV Smart LED with HDR | Landscape | 300 Nits | 6x7 Runtime | MSRP \$4,799 |



weatherloc® treated Warranty Residential Collection 24 Month (2 Year) Standard Warranty to Original Customer

What is Covered?

sealoc assumes the warranty on your new weatherloc® Residential Outdoor TV, not the original manufacturer. For the ORIGINAL PURCHASER, sealoc warrants that the product is free from defects in material and workmanship under normal use and service for the 24-month (2 year) warranty period. The warranty period begins upon the date of receipt of the product and ends 730 calendar days thereafter.

What is not Covered?

This Standard Limited Warranty covers manufacturing defects in materials and workmanship encountered in normal use, and except to the extent otherwise expressly provided for in this statement, shall not apply to the following, including, but not limited to:

- Using a Residential Collection product in a professional or commercial setting or exceeding the maximum number of runtime hours which is 7 hours per day, 5 days per week.
- Scratches, dents, blemishes, and cosmetic damage, or other damage resulting from shipping not reported upon receipt, misuse, abnormal use, abnormal conditions, improper storage, exposure to foreign substances (liquids, sand, or dirt) infestation or damage caused by pests, insects or rodents, neglect of the product, or any unusual physical, electrical, or electro-mechanical stress.
- Defects or damage resulting from excessive force.
- Equipment that has the serial number, product labels, or the enhancement data code removed, defaced, damaged, altered or made illegible.
- Ordinary wear and tear.
- Tampering with, altering, or removing any components on the television, which includes the products, materials or components used by sealoc to weatherize the television.
- Defects or damage resulting from the use of product in conjunction or connection with accessories, products, or ancillary/peripheral equipment not furnished or approved by sealoc.
- Defects or damage resulting from improper installation, testing, operation, maintenance, service, or adjustment not provided or approved by sealoc, including but not limited to installation of unauthorized software and unauthorized root access.
- Defects or damage resulting from external causes such as submersion in water, cleaning, pressure washing, collision with an object, fire, flooding, dirt, windstorm, lightning, earthquake, exposure to weather conditions, Acts of God, theft, blown fuse, use of incorrect product voltage, or failure to employ a functional Ground Fault Circuit Interrupt (GFCI) power source and an adequately rated surge protector. sealoc will not warrant products that are damaged by power surges, power spikes or brown outs.
- Inoperability, defects, or damage resulting from signal reception or transmission, viruses or other software updates/problems introduced into the product.
- Mounting the Television in an orientation other than its intended use, which includes, but is not limited to; mounting a landscape-oriented television in a portrait orientation (or vice versa), mounting the television upside down, and any mounting from a vertical plane beyond 15 degrees of tilt.
- Mounting the television over a fireplace without a six inch horizontally protruding mantel to deflect heat. Mounting a television within 10 feet of any heat source and/or not to exceed a surface temperature on the television of 104 degrees F.
- Mounting in an enclosed case or cover without proper ventilation that is not approved by sealoc. Should you have questions regarding TV covers or cases, please contact us at 972.525.9800.
- Subjecting the television to temperatures outside of the normal operating/storage temperatures of -24 F (-31° C) to 104 F (40° C).
- Failure to follow instructions regarding the routing of cables and wires into the input/output jacks of the television. Instructions are located on the back of the television, behind the protective neoprene cover.
- Any water projected at an upward angle to the television, including but not limited to water or liquid ingress into the TV speakers or ventilation points.
- Installing or operating the television within ten (10) feet of any standing, spraying, misting, or splashing water source, or mounting in a manner where the bottom of the TV is within one foot of the ground or less.

sealoc does not claim or warrant uninterrupted or error-free operation of the product and shall not be liable for the loss of use or service of this product.

What are sealoc's obligations?

During the warranty period, provided the product is returned in accordance with the terms of the Standard Limited Warranty, sealoc will repair or replace the product, free of charge. sealoc may, use rebuilt, reconditioned, or new parts or components when repairing any product, or may replace the product with a rebuilt, reconditioned, or new product. In the instance that a specific model is no longer available, sealoc reserves the right to replace it with a similar model television.

To obtain service under this Standard Limited Warranty, you must submit a return merchandise authorization form which can be found at <https://www.sealoc.tv/warrantyreturnform>.



2024 **weatherloc®** treated Outdoor Mounts
Price includes Shipping in the Continental US + 2 Year **weatherloc®** Warranty



Full Motion Mount

Model FM-A63SLC

weatherloc® articulating wall mount for screens 37"-75".

Rated for outdoor use, with a universal design, and dual locking hanger brackets.

Holds up to 130lbs.

VESA compatibility from 75x75mm-600x400mm.

Black Finish.

3 yr Warranty

MSRP \$599

Tilt Mount

Model TM-T63SLC

weatherloc® adjustable tilt wall mount for screens 37"-90".

Rated for outdoor use, with a one touch lock and key. Locking tilt angle.

Holds up to 200lbs.

VESA compatibility 75x75mm - 800x400mm.

Black Finish.

3 yr Warranty

MSRP \$299



weatherloc®

Outdoor Audio Collection have the latest features that you expect from your Indoor Soundbar but have been weatherloc® treated to survive in the Outdoor environment.

weatherloc® Technology

The proprietary process developed by sealoc, by which sensitive electronics and other outdoor products are shielded from weather, adverse elements, and corrosive environments - thereby expanding products lifespan, and enhancing experience.





2024 **weatherloc**® treated Audio
Price includes Shipping in the Continental US + 1 Year **weatherloc**® Warranty

weatherloc® SONOS Sub
MSRP \$1,299

weatherloc® SONOS Mini Sub
MSRP \$1,099

weatherloc® SONOS Arc Soundbar
MSRP \$1,799

weatherloc® SONOS Beam (Gen 2)
MSRP \$999

weatherloc® SONOS Ray
MSRP \$799

